

The **flush-mounted switch SW-400B** (1 channel) is a cutting edge product of the **MASTER Smart Home** line, suitable for controlling and managing (on-off) your lighting and electrical appliances. Automate, control and inspect the state of your electrical appliances, with the ability to operate locally via buttons and online via internet or Wi-Fi using smartphone, tablet or PC. This user manual will help you install the “**MASTER Smart Home**” app for Android or iOS and enjoy the “smart” lighting control functions.

Features

- Visualization, control and management of lighting and electrical appliances (on - off)
- User-friendly, easy-to-use interface
- Works with the Google Assistant voice commands
- Secure connection to Wi-Fi
- No hub/gateway is required
- Time-schedules
- Maximum economy and comfort through smart scenes
- Low implementation cost in existing or new installations
- Electronic protection against overheating and overvoltage with automatic reset to operation

Control: Remotely via Wi-Fi and Internet with the “MASTER Smart Home” app for smartphone, tablet and PC and locally, via button.

Technical Specifications

FLUSH-MOUNTED SWITCH	1 Channel (Electronic)
OPERATING VOLTAGE	180 - 230V AC
OPERATING FREQUENCY	50Hz
OUTPUT POWER	400W max
STAND BY CONSUMPTION	≤ 1W
TEMPERATURE CONDITIONS	- of operation: -20°C to +50°C - of storage: -20°C to +60°C
WIRE SIZE	∅ 0.5 mm to ∅ 3.5 mm
MOUNTING	Electrical switch box min. 40mm
FUSE	Electronic (overheating and overvoltage protection with automatic reset to operation)

MASTER
Smart Home

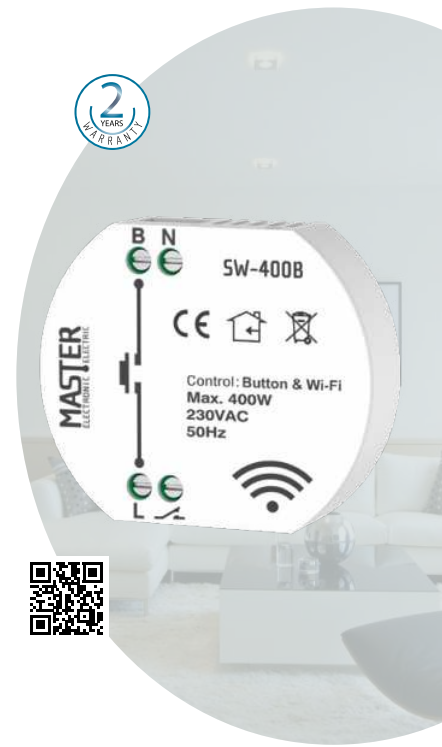
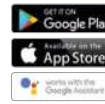
2
YEARS
WARRANTY

FLUSH-MOUNTED
SWITCH
(1 CHANNEL)

SW-400B



Works with
Google Assistant
voice commands



Electric Loads

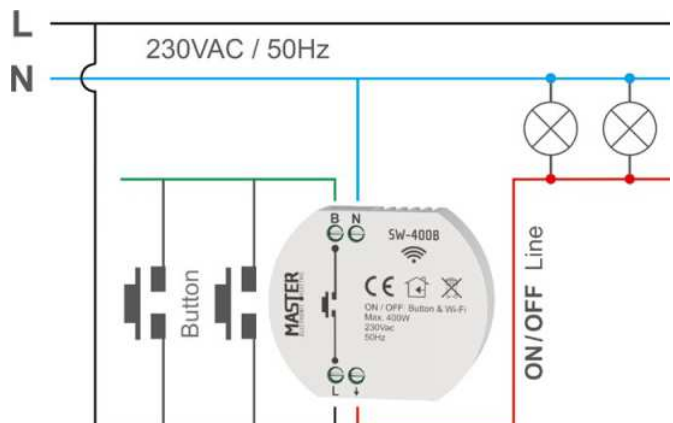
R	L	C / L			
RESISTIVE	INDUCTIVE	CAPACITIVE / INDUCTIVE			
			Economy	LED	Filament
400W max	400VA max	400VA max	400W max	400W max	400W max
1W min	1VA min	1VA min	1W min	1W min	1W min



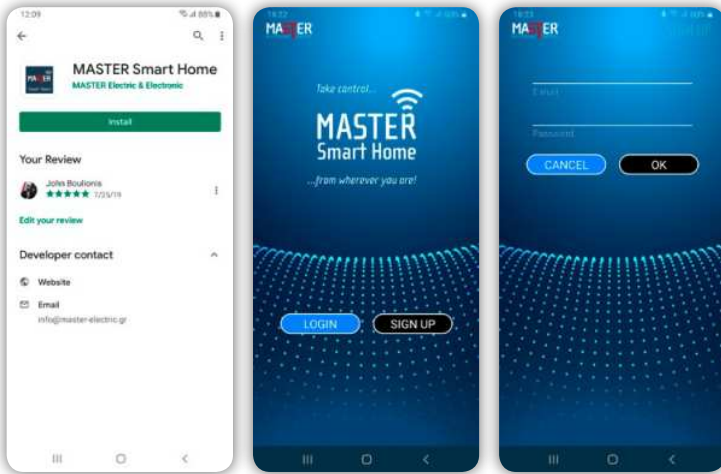
This product complies with the requirements of the following EU Directives:
2014/30/EE (EMC), 2014/35/EE (LVD)

This product should be disposed of in accordance with national laws and environmental protection requirements.

Draft of Electrical Installation



Create a User Account



Step 1

Step 2

Step 3

Download the «MASTER Smart Home» free app and create an account.

Step 1

Download the “MASTER Smart Home” application from Google Play or the App Store.

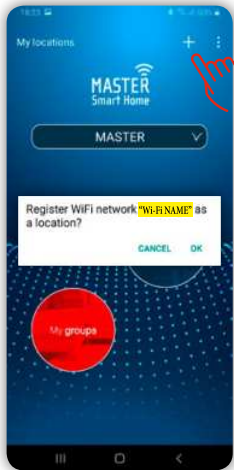
Step 2

Launch the application and tap “SIGN UP”.

Step 3

Enter your credentials, tap “OK” and follow the instructions in the activation email you received.

Create a Location



Step 4

Create easily and quickly different locations for the office or home.

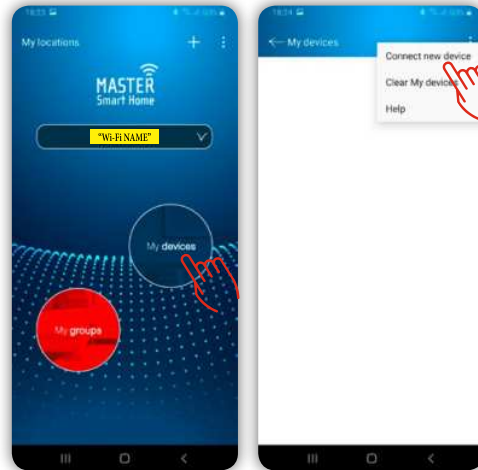
* First, make sure your Smartphone or Tablet is connected to your local Wi-Fi network.

Step 4

Sign in to the “MASTER Smart Home” application and press “+” to create your location.

* The name of the location that originally appears, is the name of your wireless local Wi-Fi network.

New Device Connection



Step 5

Step 6

Create easily and quickly different locations for the office or home.

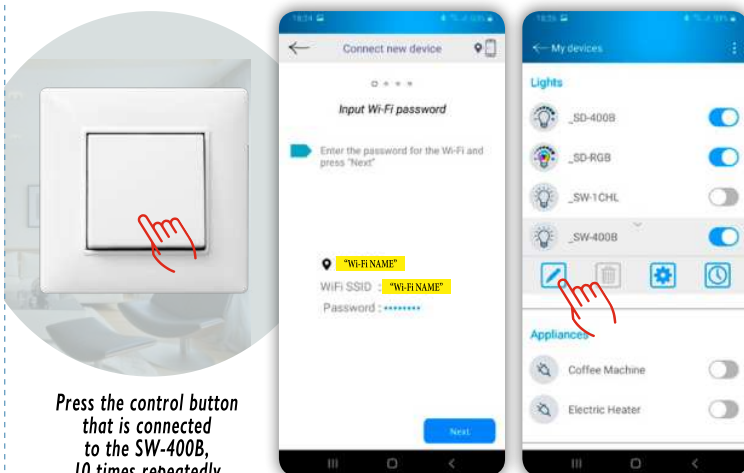
Step 5

From the app homepage, select “My Devices”.

Step 6

Press “⋮” and select “Connect a new device” from the popup window.

New Device Connection



Press the control button that is connected to the SW-400B, 10 times repeatedly

Step 7

Step 8

Step 7

Press 10 times repeatedly the control button that is connected to the SW-400B flush-mounted switch and follow the instructions in the «MASTER Smart Home» application.

* The “SSID” field automatically displays the name of your Wi-Fi network.

Step 8

After its successful connection, the SW-400B flush-mounted switch appears in «My devices». Select the connected switch to operate or configure it.