

Dimmer SD-V10 is a cutting-edge product of the **MASTER Smart Home** line, suitable for managing and controlling lighting intensity with I-10V protocol. Adjusting the intensity of your home or business lighting locally with a push-button and remotely via the MASTER Smart Home app provides the ultimate comfort. The following user manual will help you install the “**MASTER Smart Home**” app for Android or iOS and enjoy the “smart” lighting control functions.

Features

- Visualization, control and management of lighting with linear dimming
- User-friendly, easy-to-use interface
- Works with the Google Assistant voice commands
- Secure connection to Wi-Fi
- No central hub/gateway is required
- Time-schedules
- Maximum economy and comfort through smart scenes
- Low implementation cost in existing or new installations
- Soft Start function

Control: Remotely via Wi-Fi and Internet with the «MASTER» Smart Home» app for smartphone, tablet and PC and locally, via button & I-10V input.

MASTER Smart Home

DIMMER 1-10V

SD-V10



Works with
Google Assistant
voice commands



Technical Specifications

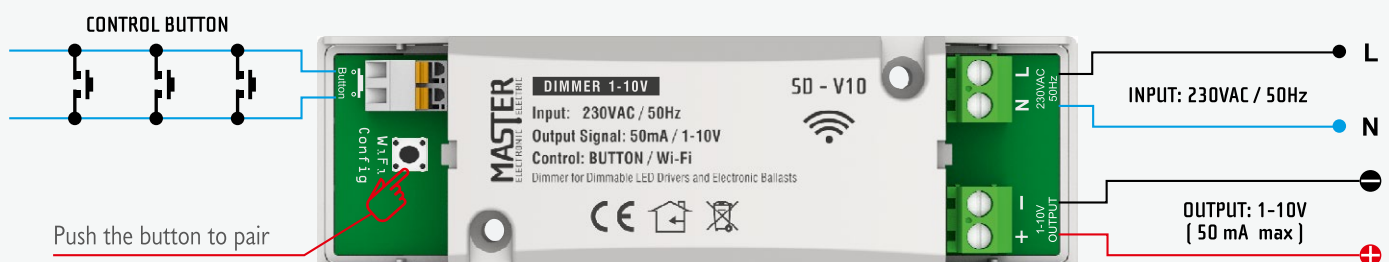
DIMMER	Electronic I-10V
OPERATING VOLTAGE	180-230V AC
OUTPUT SIGNAL	I-10V / 50mA
TEMPERATURE CONDITIONS:	- of operation: -20°C to +50°C - of storage: -20°C to +60°C
WIRE SIZE	Ø 0.5 mm to Ø 3.5 mm
FUNCTION	Soft Start



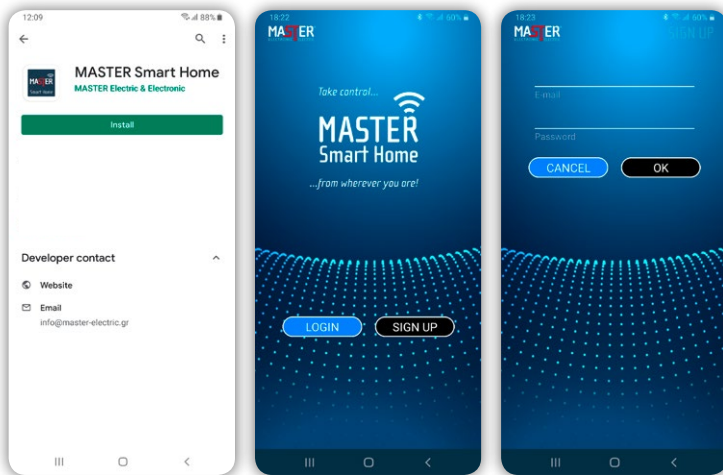
This product complies with the requirements of the following EU Directives:
2014/30/EE (EMC), 2014/35/EE (LVD)

This product should be disposed of in accordance with national laws and environmental protection requirements

Draft of Electrical Installation



Create a User Account



Step 1

Step 2

Step 3

Download the «MASTER Smart Home» free app and create an account.

Step 1

Download the “MASTER Smart Home” application from Google Play or the App Store.

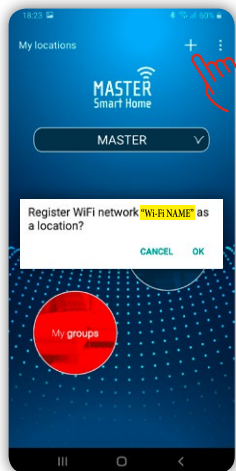
Step 2

Launch the application and tap “SIGN UP”.

Step 3

Enter your credentials, tap “OK” and follow the instructions in the activation email you received.

Create a Location



Step 4

Create easily and quickly different locations for the office or home.

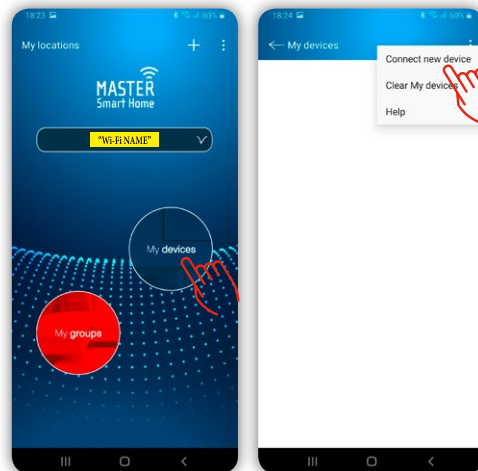
- * First, make sure your Smartphone or Tablet is connected to your local Wi-Fi network.

Step 4

Sign in to the “MASTER Smart Home” application and press “+” to create your location.

- * The name of the location that originally appears, is the name of your wireless local Wi-Fi network.

New Device Connection



Step 5

Step 6

Create easily and quickly different locations for the office or home.

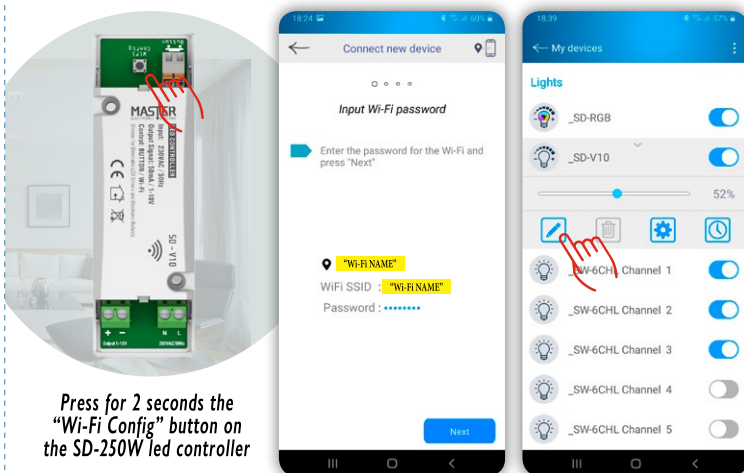
Step 5

From the app homepage, select “My Devices”.

Step 6

Press “ : ” and select “Connect a new device” from the popup window.

New Device Connection



Press for 2 seconds the “Wi-Fi Config” button on the SD-250W led controller

Step 7

Step 8

Step 7

Press for 2 seconds the “Wi-Fi Config” button on the SD-V10 dimmer and follow the instructions in the «MASTER Smart Home» application.

- * The “SSID” field automatically displays the name of your Wi-Fi network.

Step 8

After its successful connection, the SD-V10 dimmer appears in «My devices». Select the connected dimmer to operate or configure it.